

# Spring Series 2024

Carrickfergus Sailing Club

Sunday 17th March to 28th April 2024

## Sailing Instructions

### 1. Rules

- 1.1. The event is governed by the rules as defined in The Racing Rules of Sailing.

### 2. Changes to Sailing Instructions

- 2.1. Any change to the sailing instructions will be posted before 1200 on the day it will take effect, except that any change to the schedule of races will be posted by 2000 on the day before it will take effect.
- 2.2. Changes to a sailing instruction may be made on the water by notification on VHF for Keelboat classes, and verbal notification from Safety boats for Dinghy classes.

### 3. Communications with Competitors

- 3.1. Notices to competitors will be posted on the official notice board located at [www.carrickfergussc.org](http://www.carrickfergussc.org).
- 3.2. The race office is located at the Starting Battery, email [sailing@carrickfergussc.org](mailto:sailing@carrickfergussc.org).
- 3.3. On the water, the race committee intends to monitor and communicate with competitors in the Keelboat classes on VHF radio channel 37 (M1).
- 3.4. While racing, except in an emergency, a boat shall not make voice or data transmissions and shall not receive voice or data communication that is not available to all boats.

### 4. Code of Conduct

- 4.1. Competitors and support persons shall comply with reasonable requests from race officials.

### 5. Signals made ashore

- 5.1. Signals made ashore will be displayed at the Starting Battery.

### 6. Schedule of Races

- 6.1. See Notice of Race 6.

### 7. Class flags

- 7.1. The class flags are:

Designation	Class	Flag
1	YTC Unrestricted	Numeral pennant 1
2	YTC Restricted Sail	Numeral pennant 5
3	Ruffian 23	Numeral pennant 4
4	RS400	Flag F
5	PY Dinghy	Flag T

## 8. Racing Area

- 8.1. The racing area is on Belfast Lough near to Carrickfergus Sailing Club.

## 9. Courses - Keelboat Classes

- 9.1. The diagrams in Addendum A show the approximate position of all the marks.
- 9.2. The table in Addendum B shows the courses, including the course signals, the order in which marks are to be passed and the side on which each mark is to be left
- 9.3. No later than the warning signal, the race committee will display the course board above the class designation mounted on the Club Battery indicating the course to be sailed.
- 9.4. Course direction will be indicated by a red or green board located under the class flags. A red board indicates starting East to West and leaving all marks to port. A green board indicates starting West to East and leaving all marks to starboard.
- 9.5. On completion of a round of a course, boats shall continue on a further round if the course letter is still displayed above their class designation. If the course letter has changed, boats shall complete a round of the new course displayed above their class designation.
- 9.6. When the letter 'F' is displayed above a class designation, that class shall finish.

## 10. Courses - Dinghy classes

- 10.1. The diagram and table in SI Addendum C show the course, the order in which marks are to be passed, and the side on which each mark is to be left.

## 11. Marks

- 11.1. Marks for Keelboat classes are:
- R Red Outer Limit of start line
  - G Green Outer Limit of start line
  - 1 Round yellow N 54:42.5 W 5:47.5
  - 2 Round yellow N 54:41.9 W 5:47.1
  - 3 Round yellow N 54:41.5 W 5:48.8
  - 4 Round yellow N 54:42.2 W 5:49.2
  - D Round yellow N 54:41.7 W 5:47.9
- The positions listed are approximate.

- 11.2. Marks for Dinghy classes are Red/White spherical.

## 12. The Start - Keelboat Classes

- 12.1. YTC Unrestricted and YTC Restricted Sail classes will start together using Numeral Pennant 1 as the class flag. This changes RRS 26.
- 12.2. Note: Competitors should be aware that although the individual classes have amalgamated into fleets for the start they will use course designations corresponding to their class.
- 12.3. The start line is formed between the orange pole at the front of the battery and a green limit mark (G) if the first mark is to be rounded to starboard, or a red limit mark (R) if the first mark is to be rounded to port.
- 12.4. Boats whose warning signal has not been made shall avoid the starting area during the starting sequence for other races.

- 12.5. If any part of a boat's hull is on the course side of the starting line during the two minutes before her starting signal and she is identified, the race committee will attempt to broadcast her sail number on VHF channel 37 (M1). Failure to make a broadcast or to time it accurately will not be grounds for a request for redress. This changes RRS 62.1(a).
- 12.6. A boat that does not start within ten minutes after her starting signal will be scored Did Not Start without a hearing. This changes RRS A5.1 and A5.2.

## 13. The Finish - Keelboat Classes

- 13.1. The finishing line will be formed between the orange pole at the battery and the red limit mark (R) if the previous mark was left to starboard, and the green limit mark (G) if the previous mark was left to port.
- 13.2. If the race committee is absent when a boat finishes, she should report her finishing time, and her position in relation to nearby boats, to the race committee at the first reasonable opportunity.

## 14. The Start - Dinghy Classes

- 14.1. Races will be started using RRS 26 with the warning signal made 3 minutes before the starting signal, and the preparatory signal made 2 minutes before the starting signal. This changes RRS 26.
- 14.2. The starting line is between a red and white staff on the signal vessel at the starboard end and the course side of the port-end starting mark.
- 14.3. Boats whose warning signal has not been made shall avoid the starting area during the starting sequence for other races.
- 14.4. A boat that does not start within five minutes after her starting signal will be scored Did Not Start without a hearing. This changes RRS A5.1 and A5.2.

## 15. The Finish - Dinghy Classes

- 15.1. The finishing line is between a red and white staff on the signal and the course side of the finishing mark.
- 15.2. If the race committee is absent when a boat finishes, she shall report her finishing time, and her position in relation to nearby boats, to the race committee at the first reasonable opportunity.

## 16. Penalty System

- 16.1. See Notice of Race 9.

## 17. Time Limits

- 17.1. The Race Time Limit (see RRS 35), and the Finishing Window are shown in the table below:  
Race Time Limit - 90 minutes  
Finishing Window - 30 minutes  
The Finishing Window is the time for boats to finish after the first boat sails the course and finishes. Boats failing to finish within the Finishing Window, and not subsequently retiring, penalized or given redress, will be scored Time Limit Expired (TLE) without a hearing. A boat scored TLE shall be scored points for the finishing place one more than

the points scored by the last boat that finished within the Finishing Window. This changes RRS 35, A5.1, A5.2 and A10.

## 18. Hearing Requests

- 18.1. For each class, the protest time limit is sixty minutes after the last boat in that class finishes the last race of the day or the race committee signals no more racing today, whichever is later. The time will be posted on the official notice board.
- 18.2. Hearing request forms are available from the race office at the Starting Battery.
- 18.3. Notices will be posted no later than thirty minutes after the protest time limit to inform competitors of hearings in which they are parties or named as witnesses. Hearings will be held in the protest room, located as posted, beginning at the time posted.
- 18.4. RRS 62.2(a) and 66.2(a) do not apply.

## 19. Scoring

- 19.1. See Notice of Race 10.

## 20. Safety Regulations

- 20.1. A boat that retires from a race shall notify the race committee at the first reasonable opportunity.
- 20.2. Boats shall not race with an anchor on the bow. Boats infringing this instruction shall be disqualified without a hearing. This changes RRS 63.1
- 20.3. Personal Flotation Devices shall be worn at all times when afloat (except briefly while changing or adjusting clothing or personal equipment) in accordance with the provisions of rule 40 except that flag Y will not be displayed and no sound signal will be made. This changes rule 40 and the preamble to part 4 of the RRS.
- 20.4. Boats shall give way to any ship underway in the Victoria Channel.

## 21. Equipment and Measurement Checks

- 21.1. A boat or equipment may be inspected at any time for compliance with the class rules, notice of race and sailing instructions.

## 22. Trash Disposal

- 22.1. Trash may be placed aboard official [or support person] vessels.

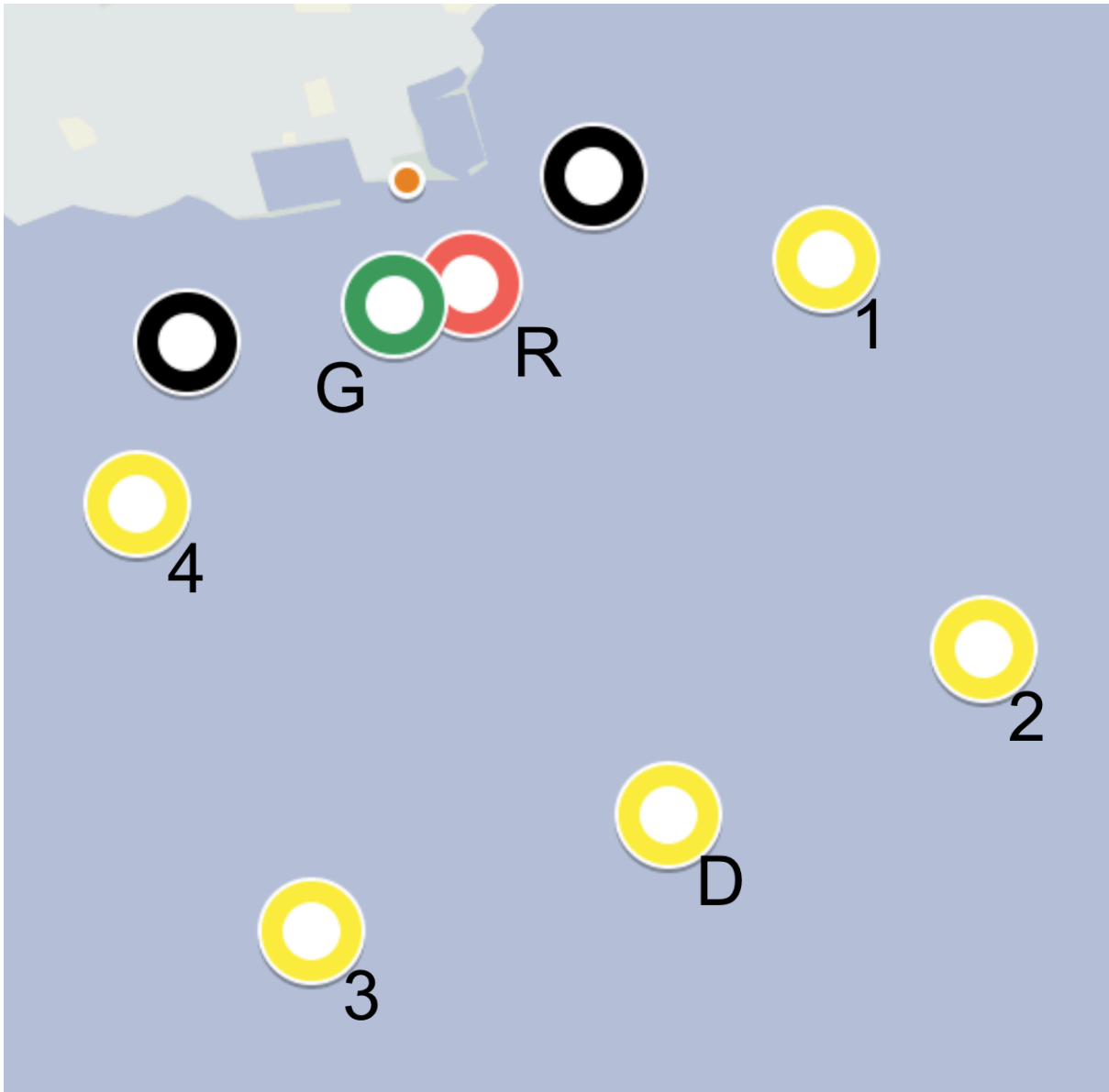
## 23. Prizes

- 23.1. See Notice of Race 13.

## 24. Risk Statement

- 24.1. See Notice of Race 11.

# Addendum A - Racing Area



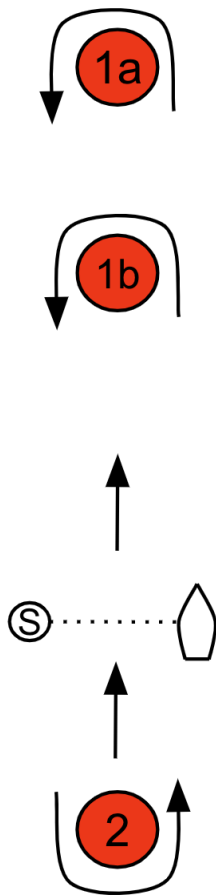
# Addendum B - Course List

Course Letter	Green board Starting West to East Leave marks to starboard					
A	1	2	4	G	R	
B	1	D	4	G	R	
C	1	3	4	G	R	
D	1	2	G	R		
E	1	D	G	R		
G	1	3	G	R		
<b>H</b>	<b>D</b>	<b>3</b>	<b>G</b>	<b>R</b>		
I	1	4	G	R		
<b>J</b>	<b>3</b>	<b>G</b>	<b>R</b>			
<b>K</b>	<b>4</b>	<b>G</b>	<b>R</b>			
L	1	2	3	G	R	
M	1	G	R			
N	1	2	3	4	G	R
<b>P</b>	<b>D</b>	<b>4</b>	<b>G</b>	<b>R</b>		
<b>R</b>	<b>D</b>	<b>3</b>	<b>4</b>	<b>G</b>	<b>R</b>	
<b>S</b>	<b>1</b>	<b>2</b>	<b>D</b>	<b>G</b>	<b>R</b>	
<b>T</b>						
<b>U</b>						
V	2	3	4	G	R	
<b>W</b>						
X	2	4	G	R		
Y	2	G	R			
Z	D	G	R			

Course Letter	Red board Starting East to West Leave marks to port					
A	4	3	1	R	G	
B	4	D	1	R	G	
C	4	2	1	R	G	
D	4	3	R	G		
E	4	D	R	G		
G	4	2	R	G		
<b>H</b>	<b>D</b>	<b>2</b>	<b>R</b>	<b>G</b>		
I	4	1	R	G		
<b>J</b>	<b>2</b>	<b>R</b>	<b>G</b>			
<b>K</b>	<b>1</b>	<b>R</b>	<b>G</b>			
L	4	3	2	R	G	
M	4	R	G			
N	4	3	2	1	R	G
<b>P</b>	<b>D</b>	<b>1</b>	<b>R</b>	<b>G</b>		
<b>R</b>	<b>D</b>	<b>2</b>	<b>1</b>	<b>R</b>	<b>G</b>	
<b>S</b>	<b>4</b>	<b>3</b>	<b>D</b>	<b>R</b>	<b>G</b>	
<b>T</b>						
<b>U</b>						
V	3	2	1	R	G	
<b>W</b>						
X	3	1	R	G		
Y	3	R	G			
Z	D	R	G			



# Addendum C - Dinghy Course



RS400 - Start - 1a - 2 - Start/Finish - 1a - 2 - Finish

PY Dinghy - Start - 1b - 2 - Start/Finish - 1b - 2 - Finish